

Matt Mullin



## The Whole Tooth and Nothing But

BY PATTY REYES

In rugby, as in most sports, there is a common mentality to fight tooth and nail to score. However, in the case of Ben Czislowski, it went a scrum too far.

During the Queensland Cup, Czislowski collided noggins with opponent Tweed Heads' forward Matt Austin. Czislowski suffered a cut above his eye, a wound that was immediately stitched up. Austin, 22, lost several teeth and also broke his jaw.

Czislowski returned to the field for his team, Wynnum Manly, his eye swelling up instantly. By the end of the game, he could no longer see out of it and wouldn't be able to for another week.

"I've had a lot of cuts and bumps and bruises and that from playing rugby league, so it wasn't, it wasn't anything out of the ordinary. It was a heavy collision, but nothing different to what I've had before," said Czislowski in a broadcast

CONTINUES ON 676

### Omron Healthcare Launches Patient Monitor →

Omron Healthcare of Bannockburn, Ill., announced the launch of a new portable, state-of-the-art patient monitor for use in hospitals, dentist offices, and regional surgery centers. The BP-S510 combines the best of Colin's leading noninvasive blood pressure technology



and Omron's user-friendly design capabilities to provide a versatile, lightweight monitor that will enable close watch of a patient's vital signs whether they are sedentary or being moved within a hospital. For more information, contact Chuck Crisafulli at Chuck.Crisafulli@Omron.com or 210-690-6203.

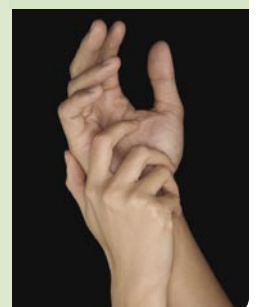
### Dentists Can Be Scleroderma Specialists

An expert in the area of autoimmune disease scleroderma said he believes all dentists have the ability and knowledge to treat these patients.

David Leader, DMD, a general dentist and a faculty member at Tufts University School of Dental Medicine, said some dentists turn away scleroderma patients, hesitant they don't have the clinical knowledge needed to treat them.

Scleroderma may be systemic or localized and affects the cardiovascular system, kidneys, lungs, and skin. Microstomia, myofacial dysfunction, and xerostomia are some dental effects of the disease. Leader said that with a combination of physical therapy, proper equipment, and premedication with muscle relaxants, dentists can treat these individuals.

"By turning patients away, these dentists are creating barriers to care that need not exist," he said in the summer issue of the *Journal of the Massachusetts Dental Society*.





*Contributing factors of tooth erosion can come courtesy of soft drinks and other low pH value foods, including fresh fruit, yogurt, pickles, and fruit juices.*

### Tooth Erosion is the Focus for New AGD Campaign

The Academy of General Dentistry recently announced a year-long sponsorship focusing on tooth erosion.

The sponsorship, made possible by an educational grant from GlaxoSmithKline Consumer Healthcare, will focus on the development and production of high-quality educational materials and opportunities for general dentists on acid erosion and tooth wear. Additionally, programs will be developed to boost the comprehension and management of oral health and the expectations of older patients.

Dentists, according to a survey of AGD members, believe tooth erosion is more common now than five years ago. Contributing factors of tooth erosion can come courtesy of soft drinks and other low pH value foods, including fresh fruit, yogurt, pickles, and fruit juices.

“At GSK Consumer Healthcare, we are committed to working with the AGD to

increase awareness and knowledge of these issues to ensure that information important to general dentists will be shared with a larger dental audience and a wider patient population,” said Ronald L. Rupp, DMD, GSK Consumer Healthcare senior manager, professional relations. “As a leader in continuing dental education and an advocate for lifelong learning, we are pleased to support the AGD in bringing initiatives such as this one to its member dentists.”

The AGD featured an educational track related to these oral health issues during its annual meeting earlier this year. A program at the event provided attendees with an objective overview aimed at increasing their awareness and knowledge of acid erosion, diagnosis, etiology, and clinical management. Another program updated attendees about denture care and offered guidance on how to improve the quality of life issues that older patients face.

#### GlaxoSmithKline Introduces New Sensodyne Pronamel

GlaxoSmithKline, makers of Sensodyne, announced the arrival of new Sensodyne Pronamel Toothpaste, a multibenefit dentifrice designed to help rehardened softened tooth enamel and protect against sensitivity. Pronamel is formulated to be



pH-neutral and minimally abrasive, while providing high fluoride availability, caries protection, and fresh breath. Pronamel is designed to help protect against tooth wear. To help combat tooth wear and acid erosion, Pronamel's formulation includes highly available fluoride as compared to everyday toothpastes. For more information, go to [www.dental-professional.com](http://www.dental-professional.com), or call 800-652-5625.

#### 'Meth Mouth' Legislation Lauded

“Meth mouth is robbing people, especially young people, of their teeth and their oral and overall health,” said Robert Brandjord, DDS, recently at Capitol Hill, announcing the ADA's support for meth mouth legislation.

The ADA announced the introduction of the Meth Mouth Correctional Costs and Reentry Support Act and the Meth Mouth Prevention and Community Recovery Act. These bills, introduced in the House in late July are geared toward preventing youths from abusing meth and the subsequent need for extensive dental care, as well as to relieve the treatment burden on state corrections' budgets. Senators from Montana and Minnesota plan to introduce like bills in the Senate.

“Meth wreaks havoc on the bodies of the people who use it,” said Rep. Rick Larsen, who co-chairs the House Meth Caucus, along with fellow Washington state Rep. Brian Baird. “This drug is a chemical cocktail that literally rots away your teeth. Meth mouth is a disease that causes permanent damage for meth users and burdens our communities with the high cost of treatment.”

An ADA press kit on meth mouth is available at [www.ada.org/goto/meth](http://www.ada.org/goto/meth).



## Amniotic Fluid Reveals Periodontal Bacteria in Some Women

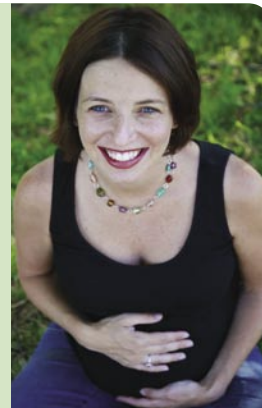
A study that evaluated women at risk for premature labor found the presence of periodontal bacteria in some of the women's amniotic fluid.

The study, which appeared in the July issue of the *Journal of Periodontology* evaluated 26 pregnant women with a diagnosis of threatened premature labor, found *P. gingivalis*, in the amniotic fluid and oral cavity in 30 percent of the women.

"We evaluated women who were at risk of premature labor," said study author Gorge Gamonal, Faculty of Dentistry, University of Chile. "We know that there are many reasons a woman can be diagnosed with threatened premature labor, including bacterial infection. Past research has shown a relationship between adverse pregnancy outcomes and periodontal disease, a chronic bacterial infection."

"While this study's findings do not show a direct causal relationship between periodontal diseases and adverse pregnancy outcomes, it is still important for women to pay special attention to their oral health during pregnancy," explained Preston D. Miller, Jr., DDS, president of the American Academy of Periodontology. "Woman who are pregnant or considering becoming pregnant should speak with their dental and health care professionals about their oral health during pregnancy."

The AAP has a risk assessment test that is available online at [www.perio.org](http://www.perio.org) or by calling 800-356-7736.



## Possible Connection Periodontal Bacteria Has With Systemic Conditions

Periodontal bacteria, as small as it is, may have a huge impact on coronary artery disease and pre-eclampsia.

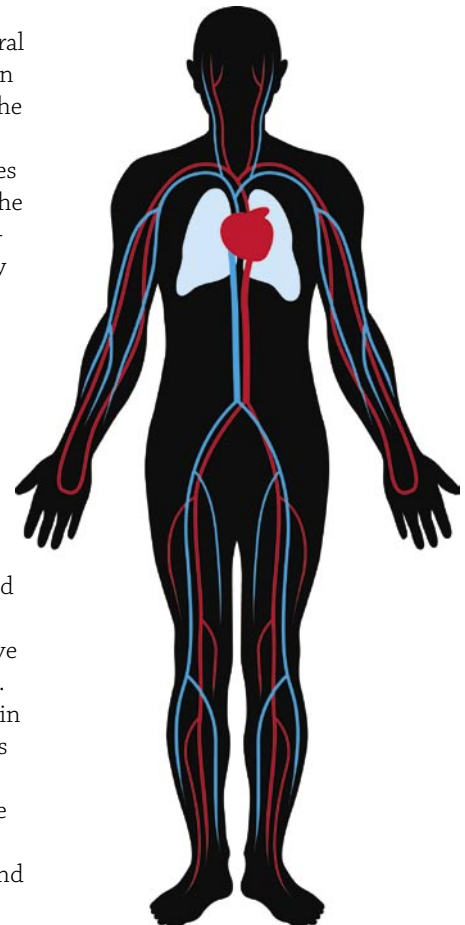
Two new studies, published in the *Journal of Periodontology* have explored the potential link between this particular bacteria and pre-eclampsia, as well as coronary artery disease.

"These studies are just a few in the growing body of evidence on the mouth-body connection. More research is needed to fully understand how periodontal bacteria travels from the mouth to other parts of the body as well as the exact role it has in the development of these systemic diseases," said Preston D. Miller, Jr., DDS, and president of the American Academy of Periodontology. "In the meantime it is important for physicians, dental professionals and patients alike to monitor the research in this area as it continues to grow so they can better work together to achieve the highest levels of overall health."

These studies found that periodontal bacteria, often invisible to the unaided

eye, may account for big effects on general health conditions. This bacteria has often been thought to play a role in many of the potential connections between overall health and oral health. Two of the studies in the *Journal of Periodontology* further the understanding of these possible connections. According to the article, one study looked at patients who had been diagnosed with coronary artery disease and examined the bacteria found in their arteries. They were able to identify periodontal pathogens in the coronary and internal mammary arteries in nine out of 15 of the patients examined.

A second study looked at women who had suffered from pre-eclampsia during their pregnancy. The study found that 50 percent of the placentas from women with pre-eclampsia were positive for one or more periodontal pathogens. This was compared to just 14.3 percent in the control group. Both of these studies support the concept that periodontal organisms might be associated with the development of other systemic conditions such as coronary artery disease and pre-eclampsia.



### Oral-B introduces Oral-B Triumph with SmartGuide

→  
New Oral-B Triumph with SmartGuide is Oral-B's most technologically advanced toothbrush. It is the first toothbrush to combine best-in-class cleaning and gum care with a wireless display that provides real-time navigation for your oral health. The wireless display feature (the first in the category) helps you



brush thoroughly, gently, and for the dental-recommended two minutes. Oral-B Triumph with SmartGuide is available department, retail, and specialty stores at a suggested retail price of \$149.99. For more information, contact Elizabeth Ming at ming.ej@pg.com or 513-622-4727.

*"Antitrust laws cannot be ignored by dentists on the basis that they are not fair, are too complicated, or make no sense."*

DANIEL SCHULTE

## Honors

**Allen Wong, DDS**, assistant professor at the University of the Pacific, Arthur A. Dugoni School of Dentistry, has been honored by the Developmental Disabilities Councils of Alameda and Contra Costa Counties with its the Excellence in Service Award for Health Care.

He was recognized for his efforts to improve access to dental care for people with developmental disabilities over the past 18 years. Additionally, he also received several certificates of recognition from the state Legislature and U.S. Congress, including one from Speaker Nancy Pelosi.

Wong, who is assistant director for Pacific's Advanced Education in General Dentistry program, serves as regional vice president of the American Association of Hospital Dentists, is a diplomate with the American Board of Special Care



Allen Wong, DDS, (far right) receives the Excellence in Service Award for Health Care from the Developmental Disabilities Councils of Alameda and Contra Costa Counties.

Dentistry, and is the Northern California coordinator for the Special Olympics Special Smiles program.

**Ove A. Peters, DMD, MS, PhD, FICD**, of San Francisco, has been appointed to the position of professor of endodontics at University of the Pacific, Arthur A. Dugoni School of Dentistry.



Ove A. Peters, DMD, MS, PhD, FICD

### Antitrust Laws: What Dentists Need to Know

With the U.S. Department of Justice and the Federal Trade Commission prosecuting dentists and physicians for antitrust violations, it is imperative health care providers be aware of antitrust laws in order to avoid violating them, said Daniel Schulte, legal counsel for the Michigan Dental Association, in the July issue of the *Journal of the Michigan Dental Association*.

He noted that for a violation of the Sherman Antitrust Act to occur, two things must take place: Two or more independent dentists or entities must engage

in joint activity, and that joint activity restrains competition.

The courts typically utilize two different standards in determining if a restraint on competition has occurred. The first, the "per se rule," which is a clear-cut determination. Is the plaintiff able to establish the existence of an agreement between the parties charged? "Under the per se analysis, it does not matter that the dentists did not intend to violate the antitrust laws, or that the agreement operates to lower consumer prices," Schulte said. Group boycotts and price-fixing could fall under this standard.

"Rule of reason" is the second standard. Is the agreement on balance, anti-competitive? If the answer is "yes," the courts apply the rule of reason.

"Antitrust laws cannot be ignored by dentists on the basis that they are not fair, are too complicated, or make no sense," Schulte cautioned.



## UPCOMING MEETINGS

## 2007

Nov. 27-Dec. 1 American Academy of Oral and Maxillofacial Radiology 58th Annual Session, Chicago, [aaomr.org](http://aaomr.org).

## 2008

May 1-4 CDA Spring Scientific Session, Anaheim, 800-CDA-SMILE (232-7645), [cda.org](http://cda.org).

Sept. 12-14 CDA Fall Scientific Session, San Francisco, 800-CDA-SMILE (232-7645), [cda.org](http://cda.org).

Oct. 16-19 American Dental Association 149th Annual Session, San Antonio, Texas, [ada.org](http://ada.org).

To have an event included on this list of nonprofit association continuing education meetings, please send the information to Upcoming Meetings, CDA Journal, 1201 K St., 16th Floor, Sacramento, CA 95814 or fax the information to 916-554-5962.

It is one of the most beautiful compensations of this life that no man can sincerely try to help another without helping himself.

RALPH WALDO EMERSON

### Award to Honor Member Dentist for Contributions

The American Dental Association has established the ADA Humanitarian Award to recognize a member for their exemplary contributions that improve and have an impact on the oral health of the underserved populace.

"We are very pleased to offer this award that recognizes those who have selflessly made a lasting impact on the oral health care of their fellow human beings," said, James B. Bramson, DDS, ADA executive director. "Acknowledging ADA members who give unselfishly of their time and professional skills not only recognizes their individual contributions, but encourages others to pursue similar activities and reflects positively on the profession."

The criteria for the annual award, according to an ADA press release, are those who have:

- made significant contributions to assist in alleviating human suffering and improving the quality of life and oral health of those served;
- exhibited leadership and outstanding humanitarian volunteer accomplishments bringing honor to the profession;
- served as an inspiration to the dental profession;

- demonstrated a commitment to humanity and selflessness in regard to direct personal or organizational gain or profit; and

- established a legacy of ongoing value and benefit to others.

The 2007 recipient will receive \$1,500 to be earmarked to the dental project or charity of the winner's own choosing, as well as feted at an award ceremony at the ADA's annual session in San Antonio, Texas, in 2008.

ADA members — active, life, or retired in good standing can nominate one candidate per year. Submissions, directed to the Office of the Executive Director, must be postmarked no later than Oct. 15, 2007. Nominations received after the deadline will be considered for the following year. To download the nomination packet, go to [www.ada.org/goto/international](http://www.ada.org/goto/international). For more information, contact the ADA Center for International Development and Affairs via e-mail [international@ada.org](mailto:international@ada.org) or 312-440-2726.



*"We are very pleased to offer this award that recognizes those who have selflessly made a lasting impact on the oral health care of their fellow human beings."*

JAMES B. BRAMSON,  
DDS

## RUGBY, CONTINUED FROM 671



*"I feel so lucky that the worst that I got out of it was that my head looked uglier than it does normally."*

BEN CZISLowski

interview. "The only difference was I've never had a tooth in my head before, that's for sure."

Following the April 1 cranium clash of the rugby league titans, Cziślowski, who had never spoken to Austin before, said "cause I knew he'd lost some teeth, I said 'Don't you wear a mouthguard?' And he'd said that he'd forgotten his mouthguard that day; so it was one of those things."

In a sport of unlimited body contact, Cziślowski — headaches aside — continued playing rugby league for almost three months postincident. He also suffered shooting pains in his head, fatigue, and an eye infection, according to various news reports.

Cziślowski said his doctors knew the cut was caused by a tooth and placed him on antibiotics. His physicians, however, didn't make the dentulous discovery of an embedded tooth in his forehead until mid-July: About 15 weeks after the collision between the rugby league players.

"A lot of the boys have been giving it to me, saying I was using it (embedded tooth) as an excuse for my poor form, but my eye looks a thousand times better already and I feel a lot better," said the 24-year-old rugby forward.

"I can laugh about it now, but the doctor told me it could have been serious, with teeth carrying germs," said Cziślowski in a previous interview. "I feel so lucky that the worst that I got out of it was that my head looked uglier than it does normally."

And in case anyone scoffs at his story, Cziślowski has the tooth for proof.

"I've got the tooth at home, sitting on the bedside table," Cziślowski said. "If (Austin) wants it back, he can have it. I'm keeping it at the moment as proof that it actually happened. It's a story I can tell for the rest of my life. It will get a bit more exaggerated over the years, but it's a good laugh."

For those who think this bizarre tale may be too much for them to bite on, they should consider that, in 2002, rugby league player Jamie Ainscough's arm had become so infected, there were concerns the Aussie would require an amputation, according to an article in the *Brisbane Times*. However, the source was discovered: an opponent's tooth embedded in Ainscough's arm. And, in 2004, "a foe's fang," according to the *Brisbane Times*, was removed from the noggin of Aussie rugby league player Shane Millard.

Even if one doesn't have a pension plan, but is likely to have an inheritance that includes a 401(k), provisions in the pension-strengthening law green-lighted by Congress last year may be of interest.

In an issue of *Membership Matters*, the publication of the Oregon Dental Association, Tom Domian, a financial expert, wrote that by the time many people retire, a 401(k) or other retirement account is often their single biggest financial asset, and can even be a large inheritable asset upon one's death. For spouses, it's never been a problem to simply roll the funds of an inherited 401(k) into an individual retirement account and continue to have the benefits of tax-deferred growth. But until now, children and other beneficiaries did not have this luxury.

Previously, Domian said, they were required to take a lump sum payout within five years of the account owner's death, which meant they also took a big tax hit. However, he continued, that since Jan. 1 this year, any nonspouse beneficiary can transfer an inherited 401(k) or other retirement plan into an IRA.

A beneficiary who would like to take advantage of the new rules needs to ensure the transfer is properly completed, he said, and financial and tax advisers can assist in that endeavor.

